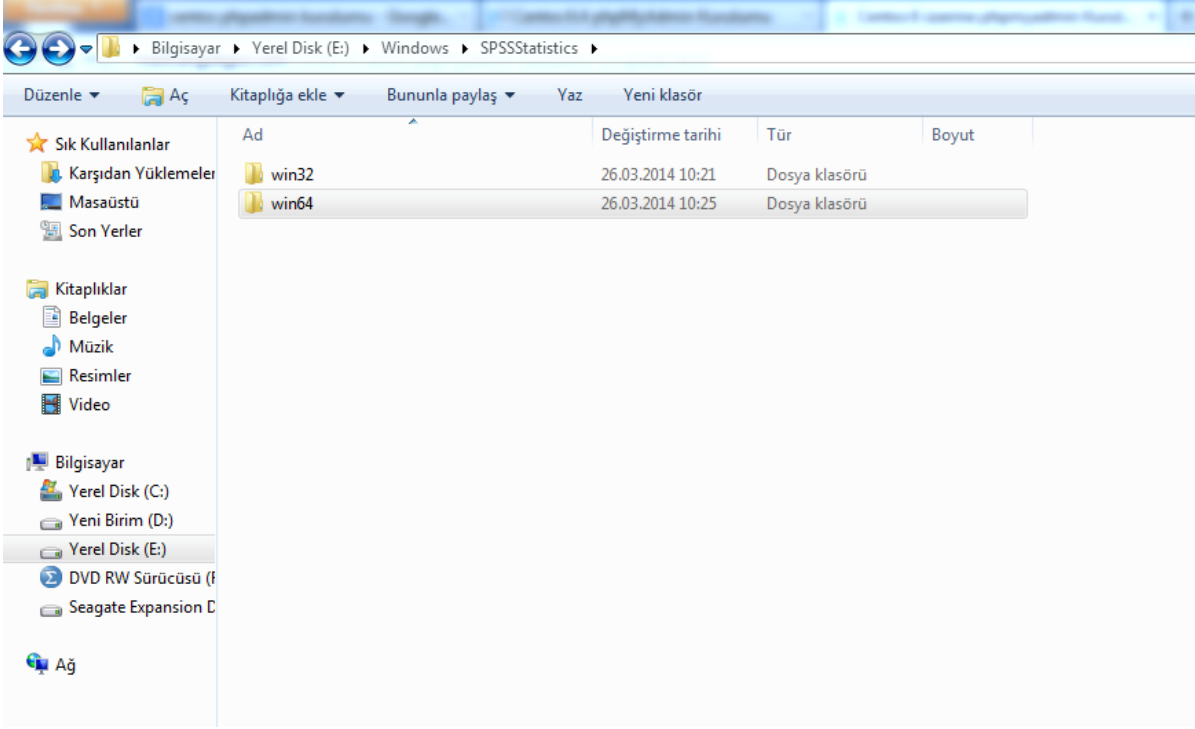
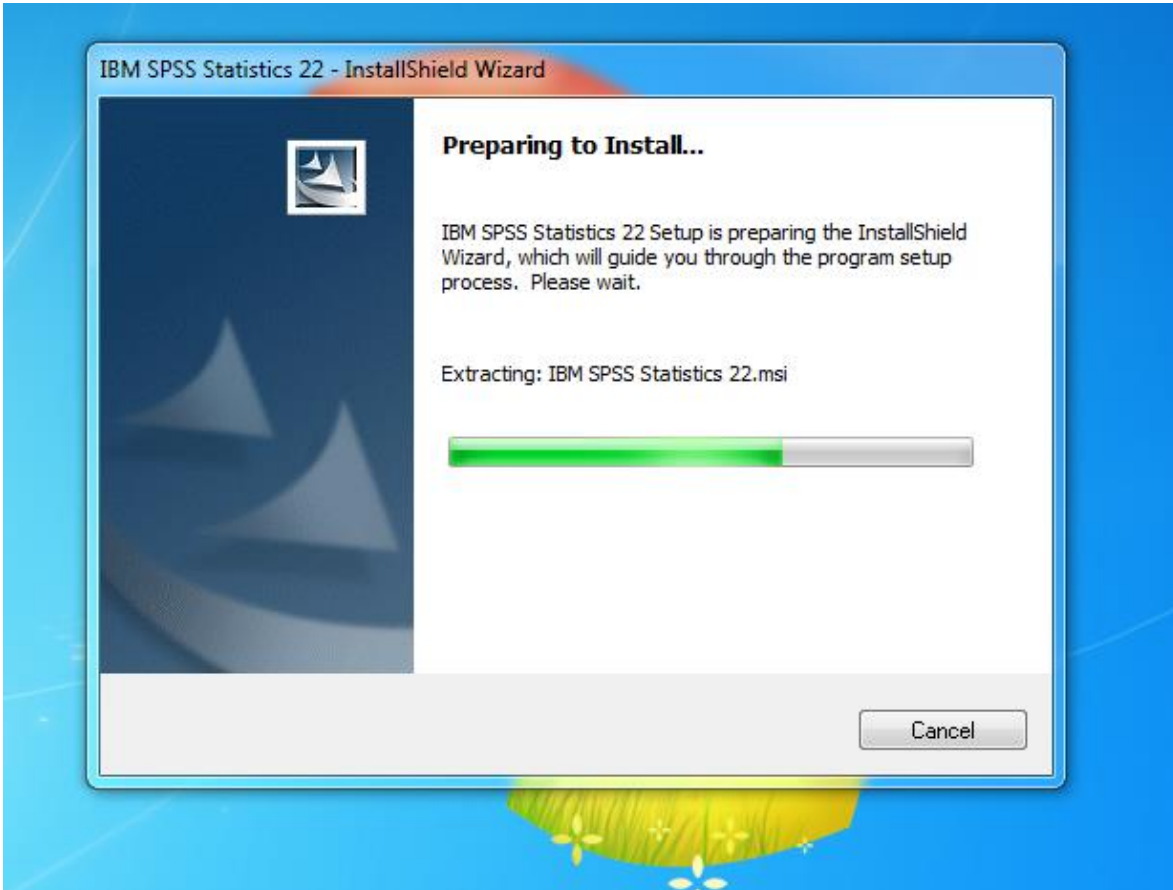
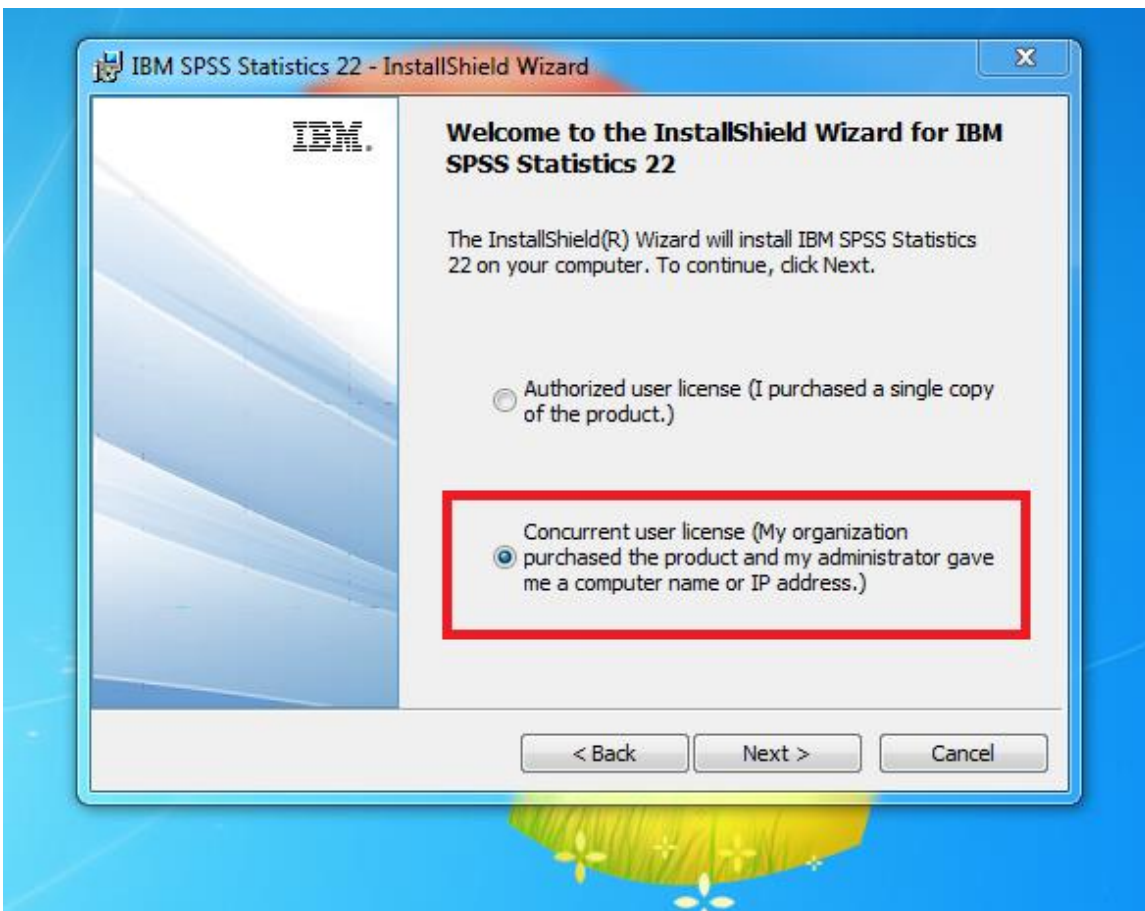
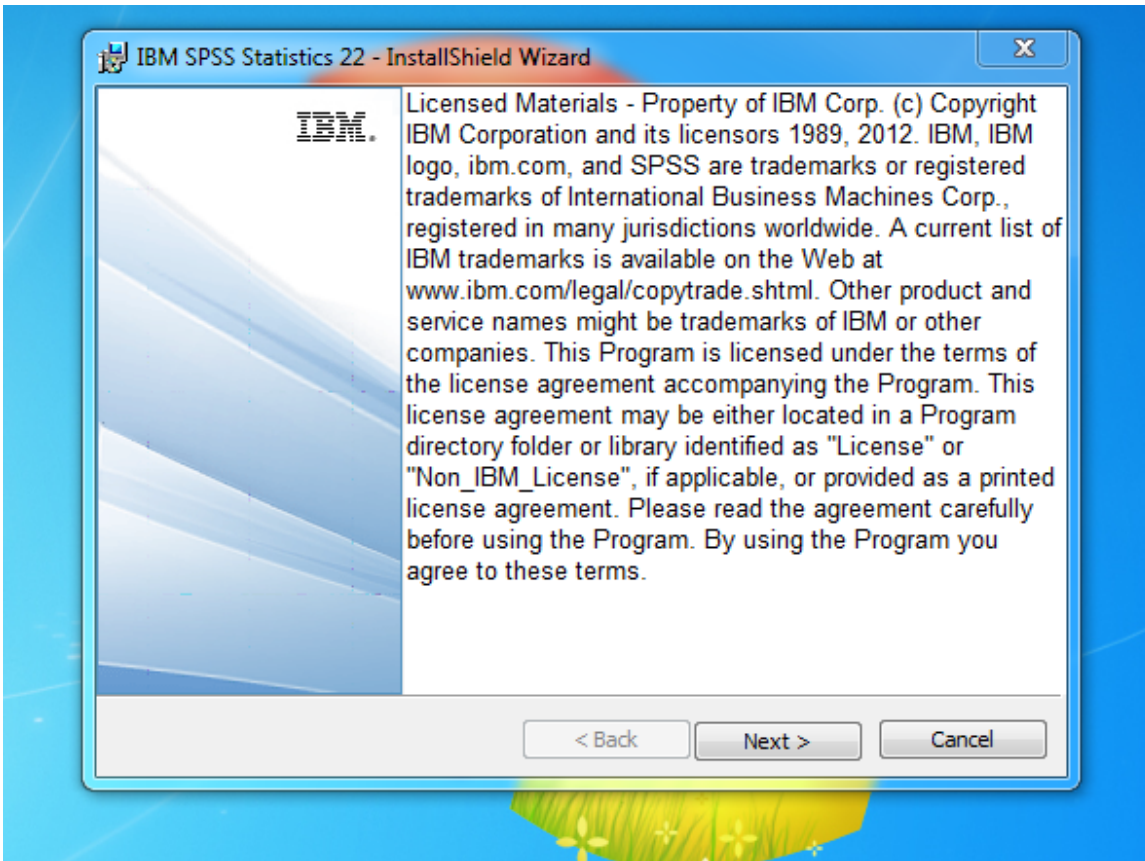


SPSS 23 KURULUMU

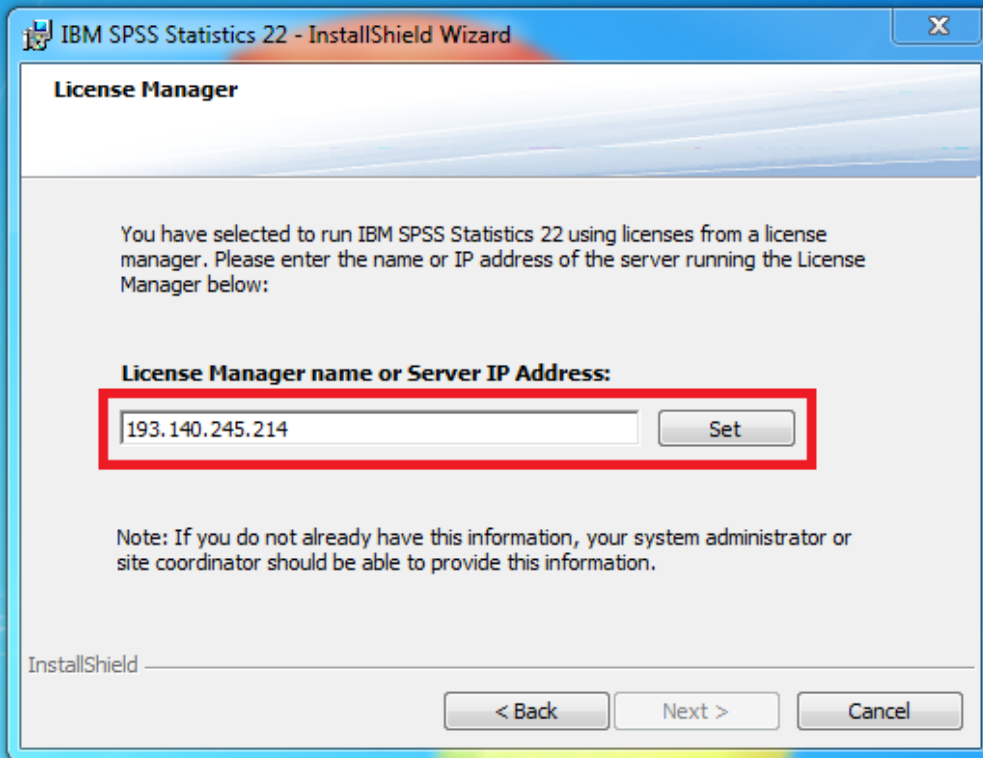
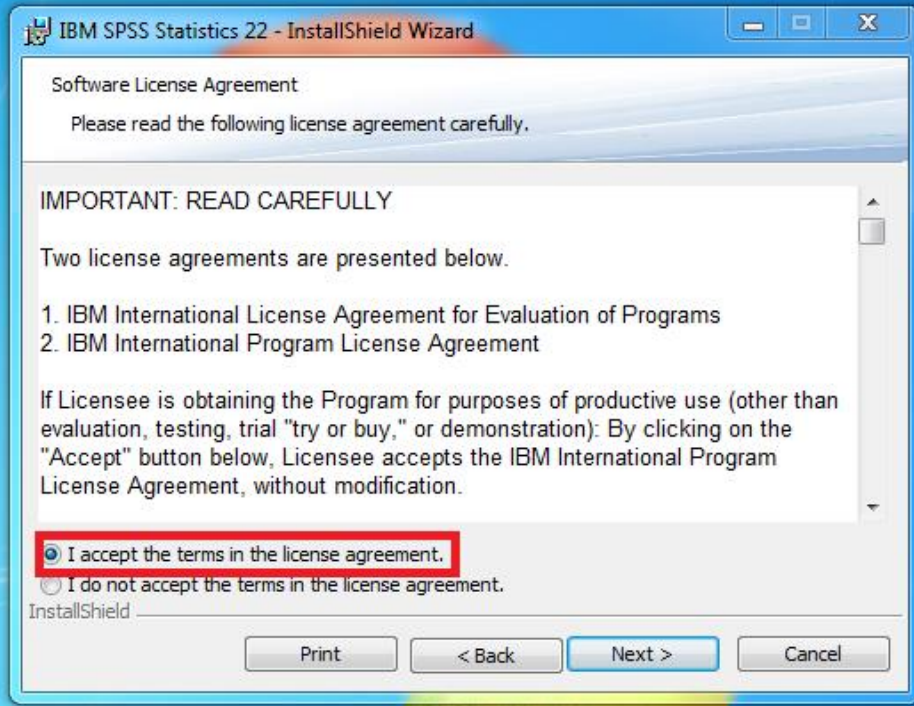


Bilgisayarınızın işletim sisteminin 32bit yada 64bit'e göre seçim yapınız ve setup.exe yi çalıştırınız.



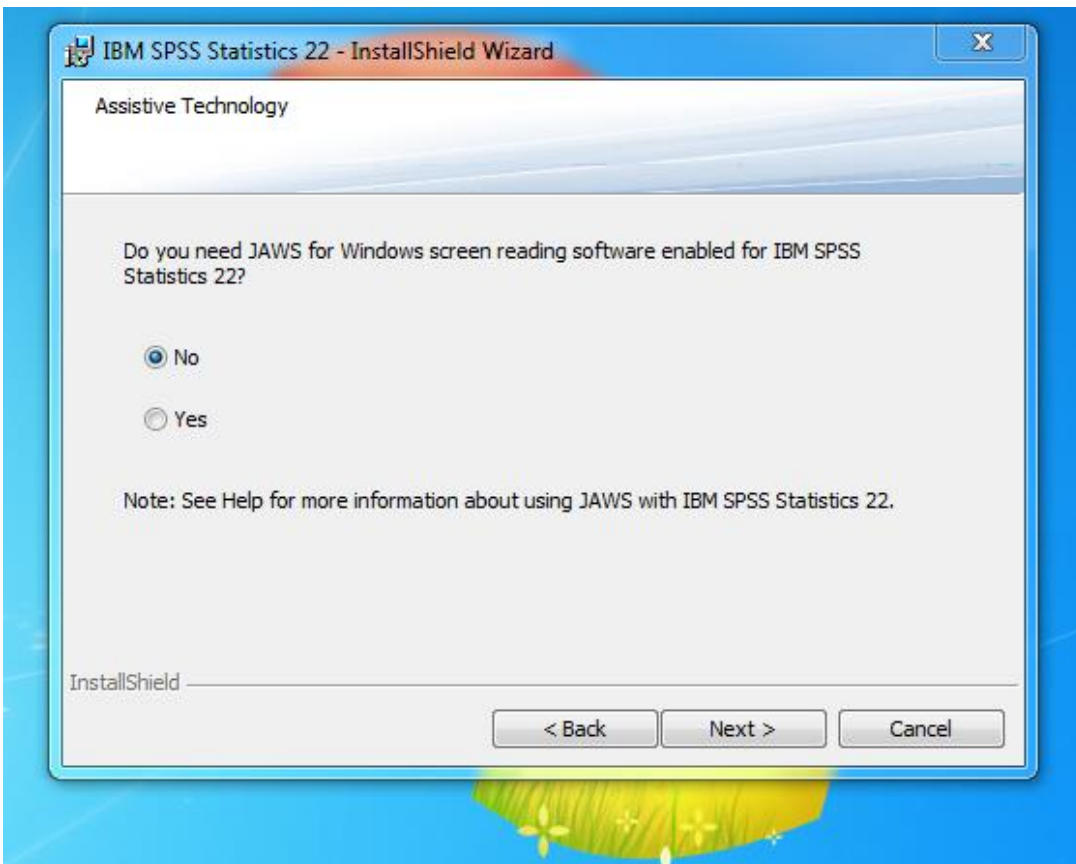
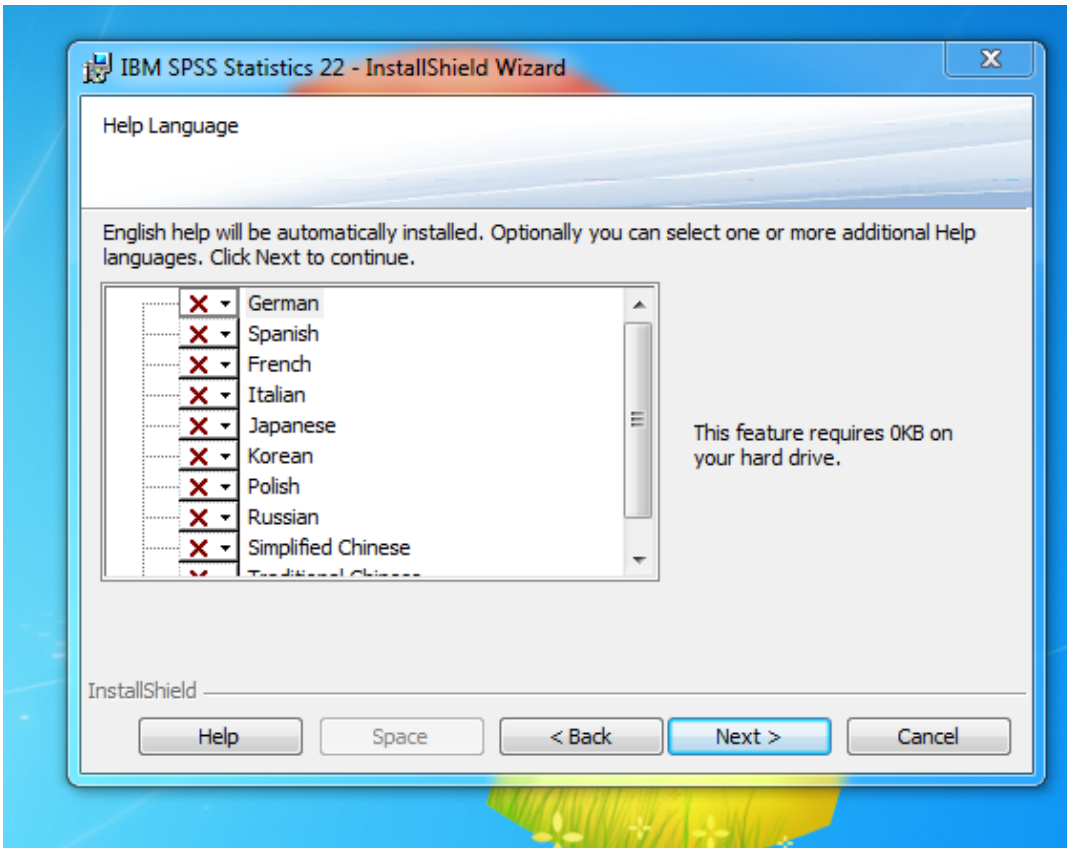


Concurrent user license seçilir

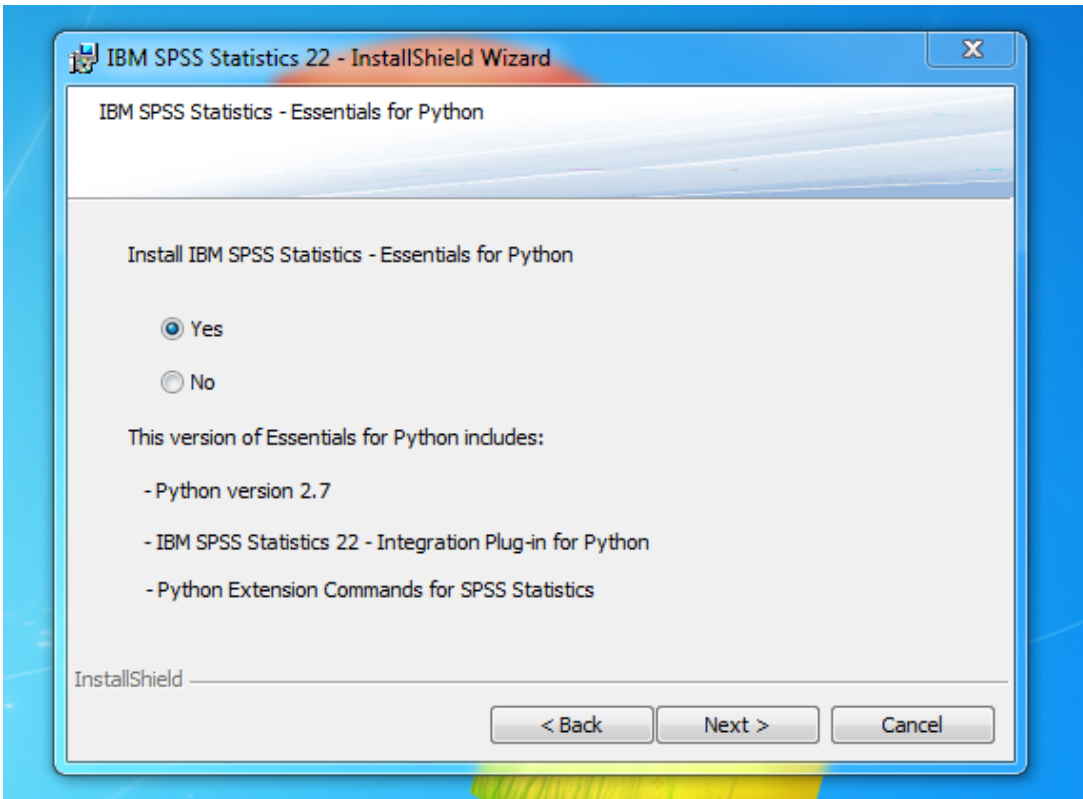


193.140.245.214 nolu ip yazılır ve SET butonuna basılır.

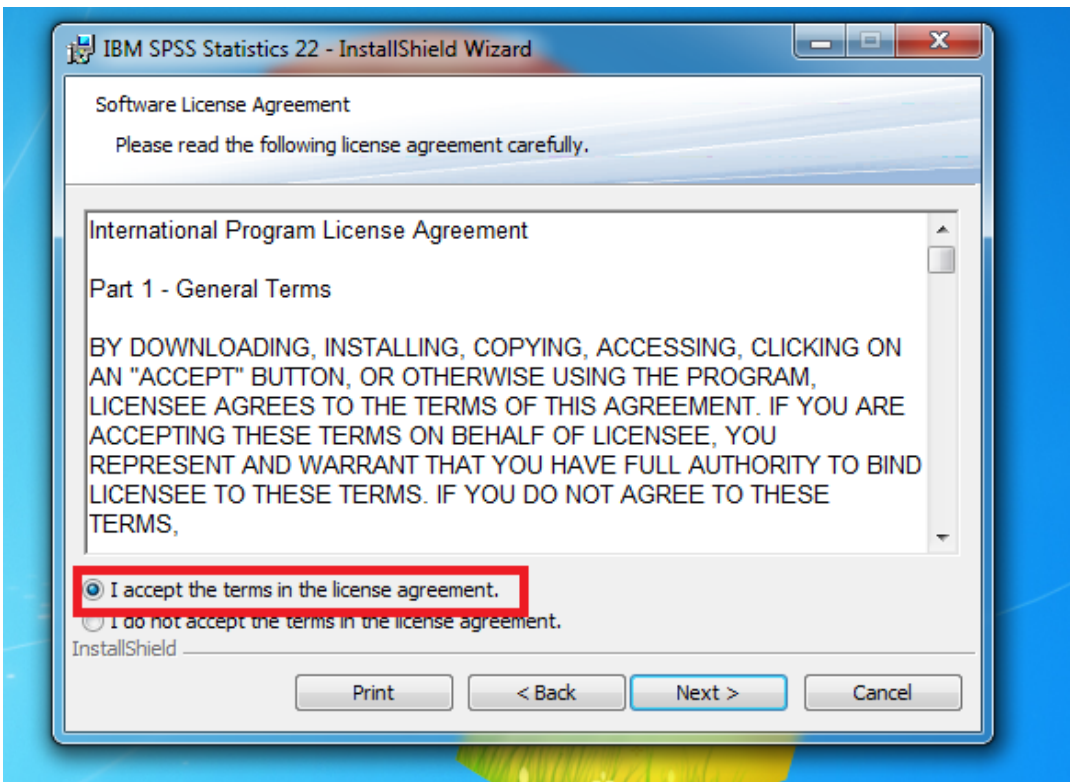
Next ile devam edilir.



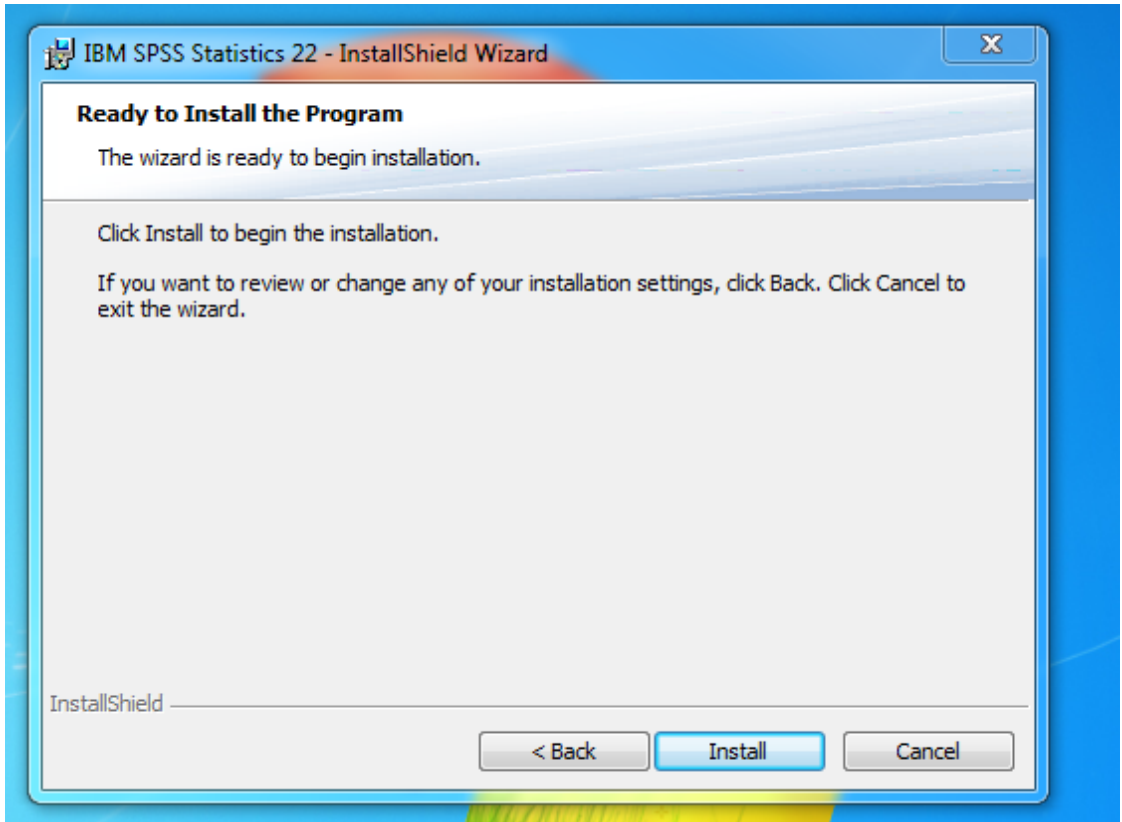
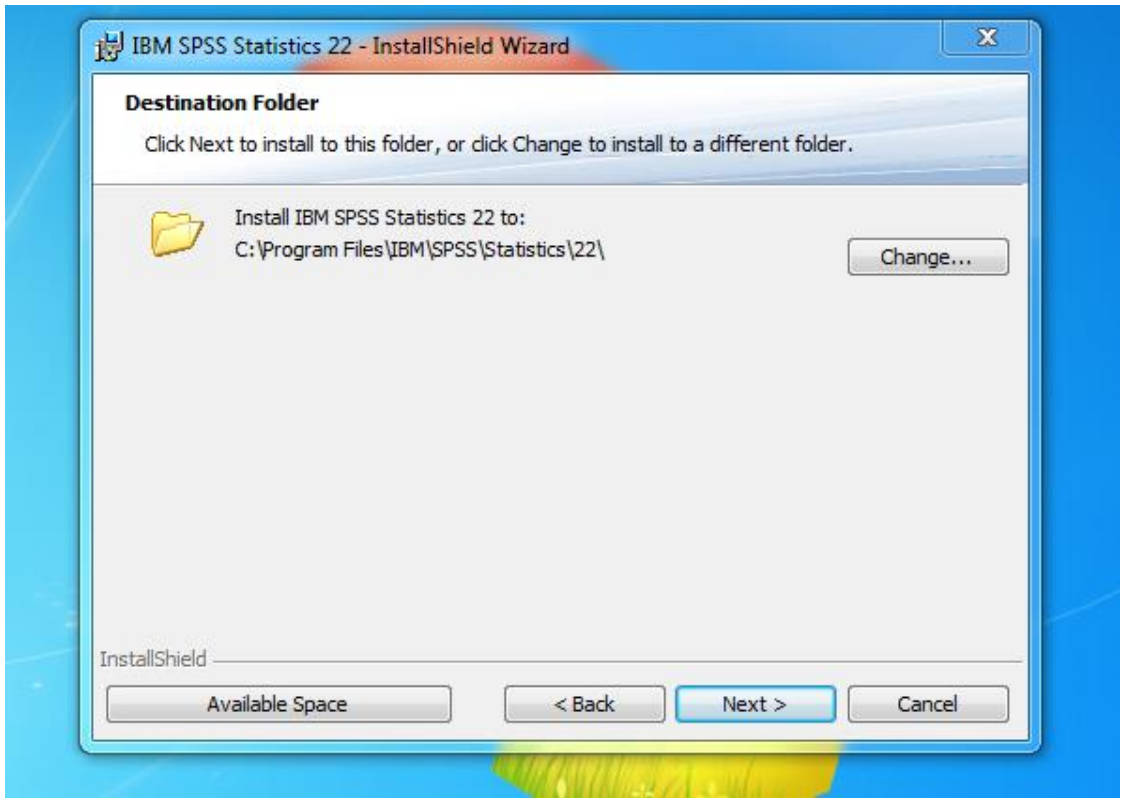
No default gelir next seçilerek devam edilir.

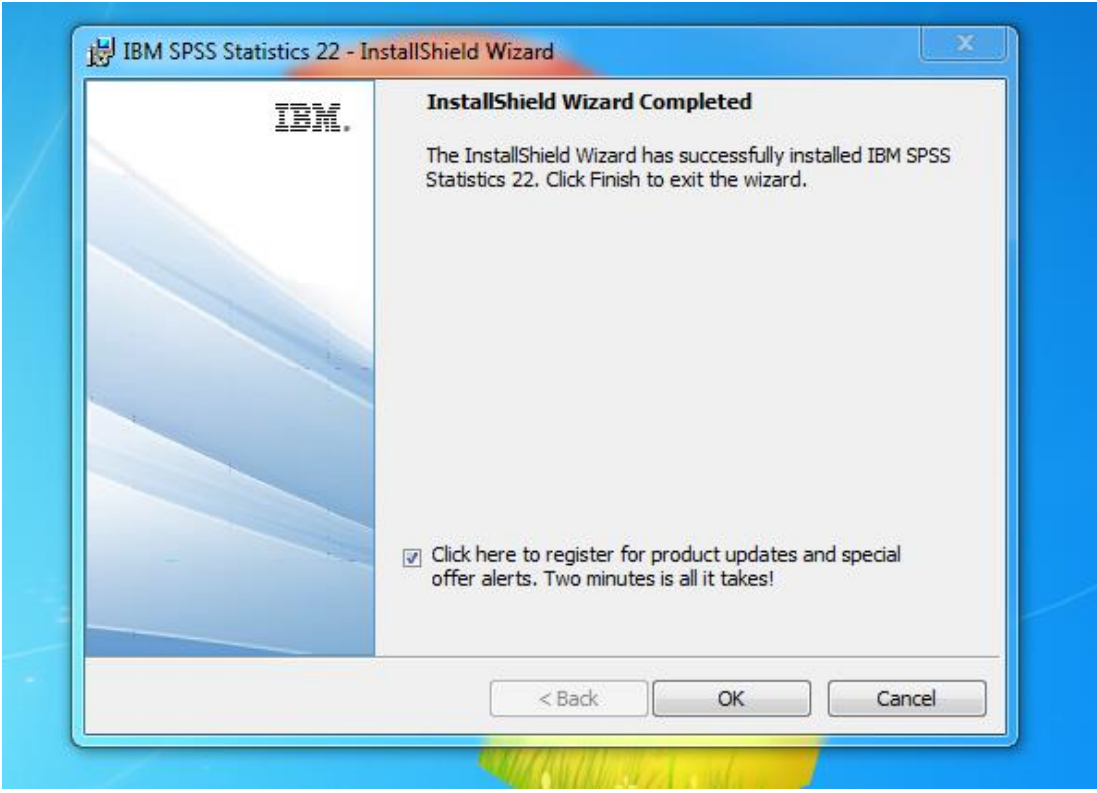


Yes default gelir next seçilerek devam edilir.



Next seçerek devam edelim





Ok butonu ile kurulum bitirilir. Bilgisayarımızı restart ederek kullanmaya başlayabiliriz.

Spss kurulumuyla ilgili problem yaşarsanız Bilgi İşlem Dairesini arayınız.

Tel numarası : 0 224 29 40 500